

[Like](#)[Tweet](#)

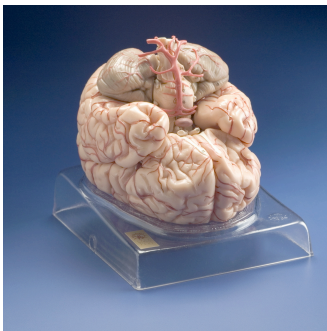
## BRAIN RESEARCH LABORATORIES

*Serving the Neuroscience Community since 1970*

### - March Featured Products -

For more than 135 years **SOMSO Models** have been respected world-wide by acknowledged experts as a highly instructive and attractive teaching tool. These models reflect quality that passes the tests for scientific accuracy, paint work, function, durability and materials.

**SOMSO Models** are produced by highly qualified and skilled craftsman. Some components are now machine-made, but all models are assembled and painted entirely by hand, making each a unique work of art.



*Brain with Arteries*

#### Brain with Arteries

Natural cast, in SOMSO-Plast®, with representation of arterial network of vessels. Separates into 9 parts: frontal and parietal lobes (2), temporal and occipital lobes (2), medulla (2), cerebellum (2), and basilar artery.

**Catalog #1009**



*Eyeball*

#### Eyeball

Enlarged approx. 4 times, in SOMSO-Plast®. Separates into 6 parts: sclerotic membrane (2), choroid membrane (2), vitreous humour, lens.

**Catalog #3006**



*Ear*

## Ear

Enlarged approx. 3 times, in SOMSO-Plast®. The petros portion of the temporal bone and section of the auditory canal are removable, the labyrinth can be taken out and opened. The tympanic membrane with malleus and incus can be removed. Altogether 6 parts.

**Catalog #2006**

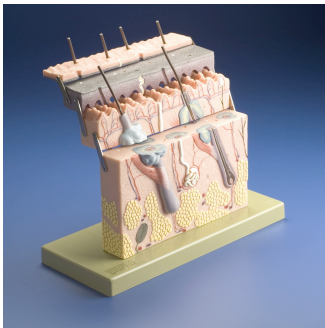


*Larynx with Tongue*

## Larynx with Tongue

Larynx: cartilages, ligaments, muscles, relief mucous membrane and thyroid gland are shown. Tongue: front part of the lower jaw is detachable, separates into 2 parts, median section. Sublingual gland and submandibular gland are shown. Separates into 5 parts.

**Catalog #6005**

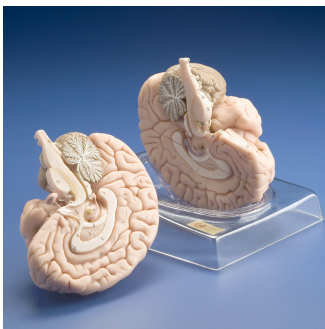


*Skin*

## Skin

Enlarged approx. 70 times, in SOMSO-Plast®. The layers of skin can be removed. Showing the first rudiments of hair (exposed and in section), sweat gland and sense organs of the skin. Separates into 4 parts.

**Catalog #7001**



*Brain*

## Brain

Natural cast, in SOMSO-Plast®. Median section. One half separates into cerebellum, medulla and cerebral lobe. Left half in one piece. Altogether detachable into 4 parts.

**Catalog #1102**



*Spinal Cord with Nerve  
Branches*

## Spinal Cord with Nerve Branches

Enlarged approx. 5 times, in SOMSO-Plast®.  
The section through the spinal cord is enlarged  
approx. 10 times. Model is one piece. In a  
transparent case and mounted on a green board.

**Catalog #9002**

*Slides · Covers · Boxes · Staining · Dishes · Education*

### Brain Research Laboratories

Phone: 617-965-5544

Toll-free 1(888)-BRL-5544

Fax: 617-965-6220

Email: [brl@brainresearchlab.com](mailto:brl@brainresearchlab.com)

*Visit us  
on the web!*

[www.brainresearchlab.com](http://www.brainresearchlab.com)



©2015 Brain Research Laboratories | Waban PO Box 88 Newton, MA 02468

[Web Version](#)

[Forward](#)

[Unsubscribe](#)

Powered by [Mad Mimi®](#)

A GoDaddy® company